



Certificate of Analysis

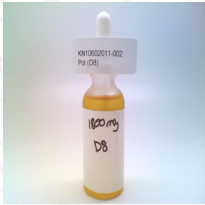
Sample:KN10602011-002
Harvest/Lot ID: DT18BB1217
Seed to Sale #N/A
Batch Date :01/07/23
Batch#: DT1801
Sample Size Received: 30
Total Weight/Volume: N/A
Retail Product Size: 30 ml
Ordered : 05/07/24
sampled : 05/07/24
Completed: 05/07/24 Expires: 05/07/25
Sampling Method: SOP Client Method

May 7, 2024 | Planta Rx
1205 71st St,
Miami Beach, Florida, 33141



PASSED
Page 1 of 1

PRODUCT IMAGE



SAFETY RESULTS

 Pesticides NOT TESTED	 Heavy Metals NOT TESTED	 Microbials NOT TESTED	 Mycotoxins NOT TESTED	 Residuals Solvents NOT TESTED	 Filtration NOT TESTED	 Water Activity NOT TESTED	 Moisture NOT TESTED	 Terpenes NOT TESTED
---	---	---	---	---	--	---	---	---

MISC.

CANNABINOID RESULTS



Total THC
0.241%



Total d8-THC
5.648%



Total Cannabinoids
5.890%



	CBDV	CBDA	CBGA	CBG	CBD	THCV	CBN	D9-THC	D8-THC	CBC	THCA
%	ND	ND	<0.010	ND	<0.010	<0.010	<0.010	0.2410	5.6480	<0.010	ND
mg/g	ND	ND	<0.010	ND	<0.010	<0.010	<0.010	2.4100	56.4800	<0.010	ND
LOD	0.0010	0.0010	0.0010	0.0010	0.0010	0.0010	0.0010	0.0010	0.0010	0.0010	0.0010
%	%	%	%	%	%	%	%	%	%	%	%

Cannabinoid Profile Test

Analyzed by: 113 Weight: 0.207g Extraction date: 05/07/24 08:02:37 Extracted By: 946
 Analysis Method - Expanded Measurement of Uncertainty: Flower Matrix d9-THC:12.7%, THCa: 9.5%, TOTAL THC 11. 1%. These uncertainties represent an expanded uncertainty expressed at approximately the 95% confidence level using a coverage factor k=2 for a normal distribution. Reviewed On - 05/07/24 12:33:42 Batch Date : 05/07/24 10:08:59
 Analytical Batch -KN000956POT Instrument Used : HPLC E-SHI-008 Running On :

Reagent: 120320.R02, 052721.R11, 052721.R12 Dilution: 40 Consums. ID: 94789291.217, 200331059

Full spectrum cannabinoid analysis utilizing High Performance Liquid Chromatography with UV detection (HPLC-UV). (Method: SOP.T.30.050 for sample prep and Shimadzu High Sensitivity Method SOP.T.40.020 for analysis.). *Based on FL action limits.

This report shall not be reproduced, unless in its entirety, without written approval from Kaycha Labs. This report is an Kaycha Labs certification. The results relate only to the material or product analyzed. Test results are confidential unless explicitly waived otherwise. Void after 1 year from test end date. Cannabinoid content of batch material may vary depending on sampling error. IC=In-control QC parameter, NC=Non-controlled QC parameter, ND=Not Detected, NA=Not Analyzed, ppm=Parts Per Million, ppb=Parts Per Billion. Limit of Detection (LoD) and Limit Of Quantitation (LoQ) are terms used to describe the smallest concentration that can be reliably measured by an analytical procedure. RPD=Reproducibility of two measurements. Action Levels are State determined thresholds for human safety for consumption and/or inhalation. The result >99% are variable based on uncertainty of measurement (UM) for the analyte. The UM error is available from the lab upon request. The "Decision Rule" for the pass/fail does not include the UM. The limits are based on F.S. Rule 64-4.310.

Sue Ferguson
Lab Director
State License # n/a
ISO Accreditation # 17025:2017


Signature

05/07/24
Signed On